

ZM-9003

Zone Manager



The ZM-9003 is a remote control switch panel with 4 interlocking selection switches and 2 momentary switches. Connecting it to the 9000 series amplifier's control input terminal permits various controls such as BGM source selection and the sound volume adjustment. It can be mounted in a standard 2-gang electrical box in the wall.

Key features

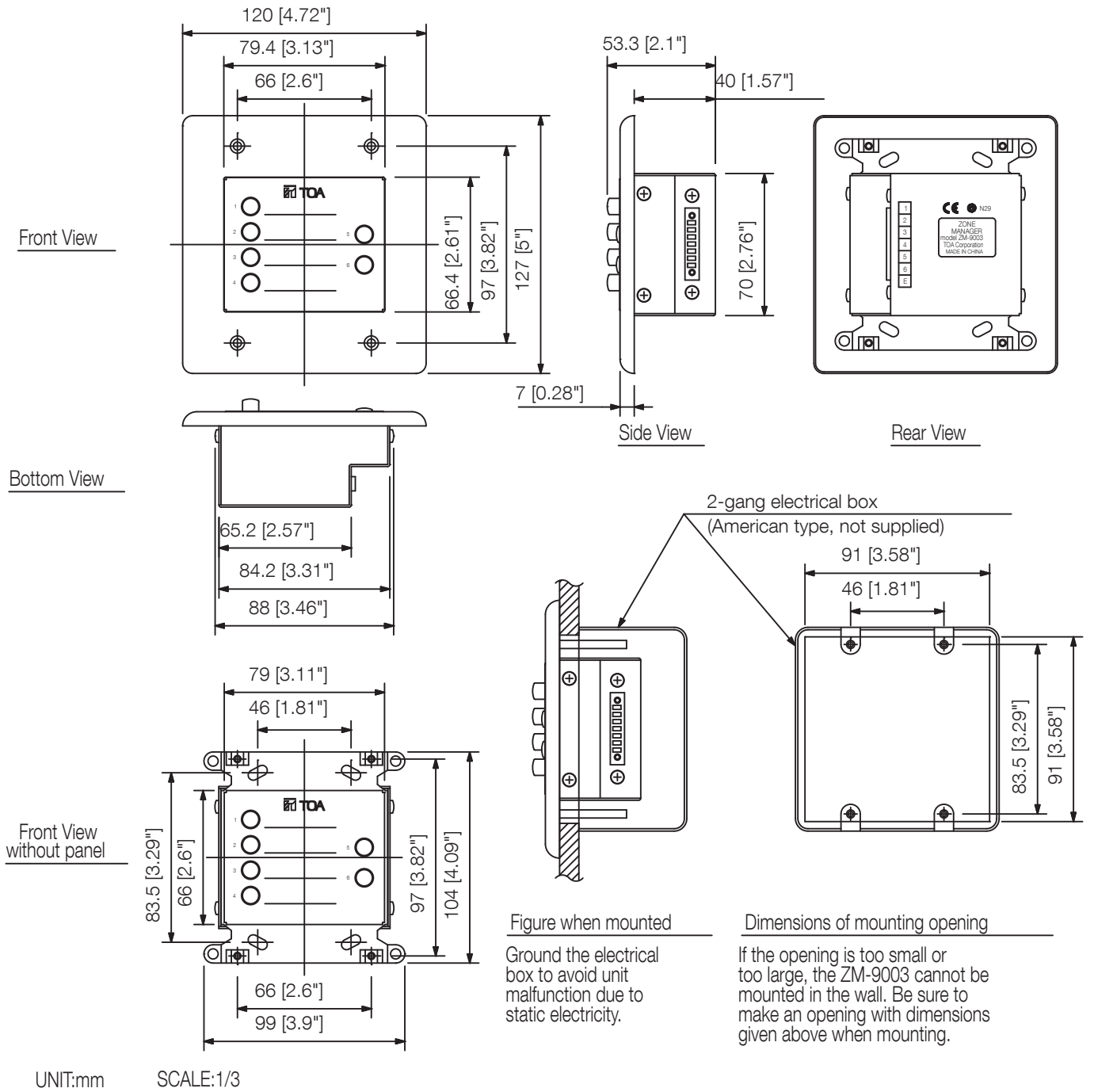
- Max. loop resistance: 250 Ω per line
- Removable terminal block
- Maximum 2 remote panels per chassis

Specifications

Line Resistance	250 Ω or less (per line)
Terminal	Removable terminal block (7 pins)
Operating Temperature	-10# to +40# (14# to 104#)
Finish	Surface-treated steel plate, white, paint
Dimensions	120 (W) x 127 (H) x 53.3 (D) mm (4.72 x 5" x 2.1")
Weight	375 g (0.83 lb)
Included Accessories	Box mounting screw (No.6-32UNC x 30) ...4, Box mounting screw (M4 x 30) ...4, Panel mounting screw ...2, Removable terminal plug (7 pins) ...1

Note: If controls of more than 4 channels are needed, then additional C-001T Control I/O Expansion Module is required to expand control inputs.
Since no electrical box is supplied with the unit, prepare it separately.

Dimensions



A&E specifications

Remote control unit for fully digital mixer M-9000. 6 programmable buttons for retrieving by default, volume settings, or the choice of signal sources. Four buttons in detent release version and two buttons in a scanning version. Wiring with a six-wire shielded cable. Simple flush-mounted installation.

Height: 12,7 cm

Depth: 5,6 cm

Width: 12,0 cm