

# DIGITAL MIXER

## D-901



## DESCRIPTION

The D-901 Digital Mixer is perfect to take the important audio role in AV-based presentation systems. The compact unit features a modular design that allows configuring the unit as requirements dictate as well as to expand its scope of operation. Its 12 in/8 out capability allows use with various source equipment and advanced functions include sophisticated automixing, intelligent automatic feedback suppression, EQ, memory presets as well as full remote control capability. D-901 modules include monaural and stereo input modules, line output modules and a remote control module.

## FEATURES

- **Ready for any requirement.**

The new TOA D-901 Digital Mixer is a fully modular, cost-effective digital mixer featuring a 12-input, 8-bus, 8-output channel configuration (12 x 8 matrix) with easy operation that can be expanded as applications require.
- **All-in-one design.**

The compact D-901 is just 3U-sized but incorporates several of the most important functions. These include a digital mixer, feedback suppression, auto mixing, parametric EQ, compression, delay and echo. Its remarkable operational scope allows it to do the work that conventionally requires several different pieces of equipment, providing a cost-effective solution that is perfect for any requirement.
- **Feedback suppressor.**

This sophisticated and TOA proprietary function automatically processes feedback at certain frequencies through constant monitoring then automatically attenuates only the precise problematic frequencies, keeping the audio sounding natural.
- **Automatic mixing function**

The D-901's automatic mixing function adjusts input level automatically to make operating easier. It features smart Number of Open Microphones (NOM) attenuation that sets the gain for all microphone inputs according to the number of microphone inputs utilized. This allows satisfactory levels to be set without feedback problems. A "Ducker" function operates when an input channel is open, to enable that channel's priority to initiate the the low channel signal that will attenuate the other channels.



- **Sound processing**

As a full-featured digital mixer, the D-901 incorporates several useful built-in functions to ensure maximum performance without needing other equipment. A compressor can be switched in to reduce the dynamic range between the smallest and largest signals, preventing amplifier clipping at high levels. The flexible crossover function allows setting speaker crossover points and filter slopes to optimize multichannel speaker systems. An overload protection circuit will automatically activate to protect the speakers from overload and distortion, helping to save costs. Full equalization and filter setting configurations can be saved in up to sixteen memories for instant recall. The time delay function can be used to align remote speakers.
- **Ergonomic control layout**

Convenient front panel controls and display make it easy to perform all functions and confirm parameter settings without requiring a PC. Another advantage is the ability to store up to 16 sound parameter setting configurations in memory for instant recall when required. These include crossover, EQ, filter slope settings, time delay and other parameters. Control settings can also be locked to prevent unauthorized tampering.
- **Wide application scope and remote control ability.**

The D-901 can be externally controlled with an external signal trigger or the RS-232C port on the back panel which enables the D-901 to easily interface with external equipment.

Note: The D-901's heatsinks and aircooling are located at the bottom of the unit, requiring a perforated ventilation panel to be placed directly below the unit when rack-mounting is desired.



# D-901

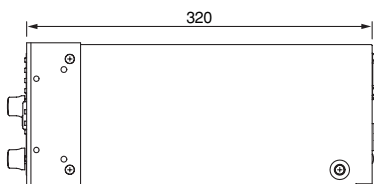
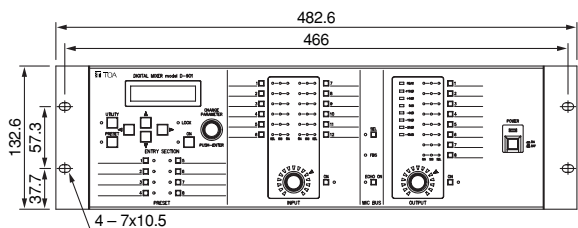
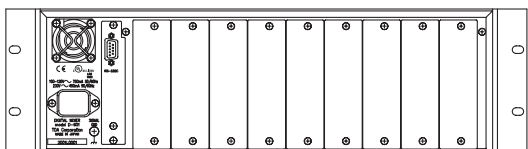
Main Unit (Installation rackmount only)



The D-901 is a 19" rack-mounted (3U high) digital mixer configured with 12 inputs, 8 buses, and 8 outputs. It features signal processing functions necessary for sound systems such as feedback suppression and auto-mixing.

Modular construction permits flexible configuration of inputs and outputs, from 2-IN/4-OUT to 12-IN/8-OUT systems.

All functional parameters can be set at the unit. Settings can be stored in the unit's internal memory as "preset memory" and can be recalled using the front panel-mounted operation keys.



Unit: mm

## SPECIFICATIONS

\* 0dB = 0.775V

Model	D-901
Power Source	100 – 120V, 230V AC, 50/60 Hz
Power Consumption	40W
Operating Temperature	+5° C to +40°C
Frequency Response	20 – 20,000Hz, ±1dB (+4dB* Input)
Input	Max. 12 channels, modular construction (modules optional)
Output	Max. 8 channels, modular construction (modules optional)
<b>Signal Processing</b>	
Feedback Suppression Function	12 filters (auto/dynamic)
Auto-Mixing Function	Ducker (automatic muting), NOM attenuation
Auto-Mixing Group	4 groups
Equalizer/Filter	Parametric equalizer: 20 – 20,000Hz, ±15dB, Q: 0.267 – 69.249 Filtering: High-pass filter 20 – 20,000Hz, 6dB/oct, 12dB/oct. Low-pass filter 20 – 20,000Hz, 6 dB/oct, 12 dB/oct Notch filter 20 – 20,000Hz, Q: 8.651 – 69.249 All-pass filter 20 – 20,000Hz, Q: 0.267 – 69.249 High shelving filter 6 – 20,000Hz, ±15dB Low shelving filter 20 – 500Hz, ±15dB Horn equalizer 20kHz, 0 to +18dB (1dB steps) Crossover filter: 20 – 20,000Hz, 6dB/oct, 12 dB/oct, 18dB/oct, 24dB/oct
Compressor/ Auto-Leveler	(Compressor mode) Threshold: -20 to +20 dB (1dB steps) Ratio: 1:1, 2:1, 3:1, 4:1, 8:1, 12:1, 20:1, ∞:1 Attack time: 0.2ms to 5s Release time: 10ms to 5s Gain: -∞ to +10dB (Auto-leveler mode) Target level: -20 to +10 dB (1dB steps) Maximum gain: 0 to +20dB (1dB steps) Attack time: 10ms – 10s Release time: 100ms to 10s
Delay	Delay time: 0 – 682.6 ms (0.021 ms steps)
Matrix	12 x 8
Crosspoint Gain	-∞ to 0dB (1dB steps)
Preset memory	16
Auxiliary Function	System Locking function
Control	RS-232C, D-sub connector (9 pins), Remote control module (option)
Front Panel Section	Preset memory recall key: 8, LCD Screen, Screen shift key (up/down/left/right), setting knob Input level indicator: Dual color LED Output level indicator: Dual color LED Channel selector key: 12 (input channel selection) 8 (output channel selection) Channel volume control: 1 (input channel selection) 1 (output channel selection)
Rear Panel	Input module slot: 6 (input/output module slot: 2) Output module slot: 2      Remote control module slot: 1
Finish	Panel: Aluminum, hair-line finish, black Others: Pre-coated steel plate, black, 30% gloss
Dimensions	482.6 (W) x 132.6 (H) x 320 (D)mm (excluding projection)
Weight	6.9 kg
Accessory	Power cord (2m) x 1, Rack mounting screw x 4, Rack mounting bracket (preinstalled on the unit) x 2, Module mounting screw (spare) x 4, Blank panel (preinstalled on the module slot) x 9, Fiber washer x 4

Note: When installing the unit, never block the intake vents provided in the unit's bottom near the rear.

# D-901 Modules

The D-901's modular design allows you to configure the most cost-effective design for each application. TOA offers a range of modules to suit a variety of input and output requirements.

## INPUT MODULES

### Mic/Line Input Modules

Monaural Type			Stereo Type
A/D Converter	XLR Connector	Removable Terminal Block Connector	D-936R
20 bits	D-922F	D-922E	
24 bits	D-921F	D-921E	

### Digital Input Modules

Applicable AES/EBU Format	Applicable S/PDIF Format
D-923AE	D-937SP

## OUTPUT MODULES

### Line Output Modules

XLR Connector	Removable Terminal Block Connector	RCA Pin Jack Connector
D-971M	D-971E	D-971R

### Digital Output Modules

Applicable AES/EBU Format	Applicable S/PDIF Format
D-972AE	D-961SP

## REMOTE CONTROL MODULES

### Remote Control Modules

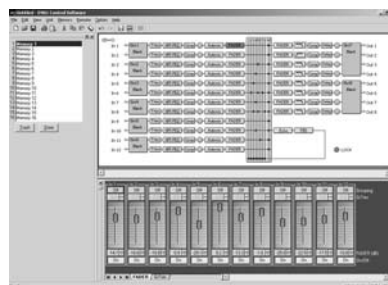
8 inputs 8 outputs	24 inputs 16 outputs
D-981	D-983

### VCA Control Module

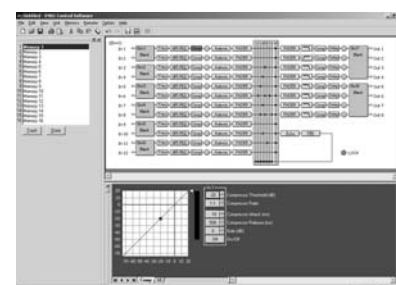
VCA control (20 channels) + 8 inputs 8 outputs
D-984VC

# PC Software

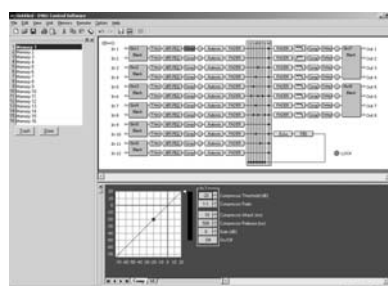
The D-981 allows external remote control of memory presets, The D-901 comes standard with dedicated software to assist in D-901 system configuration, parameter setting and general setup using a PC. The software features menu-driven operation with an easy to understand GUI. The software offers comprehensive control over virtually every possible function. For set up these include crossover slopes, combinations, and storing crossover configurations. For operation, menus offer dedicated pages for viewing and adjusting matrix, trim, EQ, compression, automix, gating, filtering, delay, echo and feedback suppression settings as well as mic/line input modules and many others. Presets can be configured and stored for immediate recall when desired. In addition, the software allows determining user level as well as preparing the D-901 for remote control. Lastly, a full assortment of protection functions can be utilized.



Input/output Gain



Compressor/Limiter/Noise Gate



Crossover

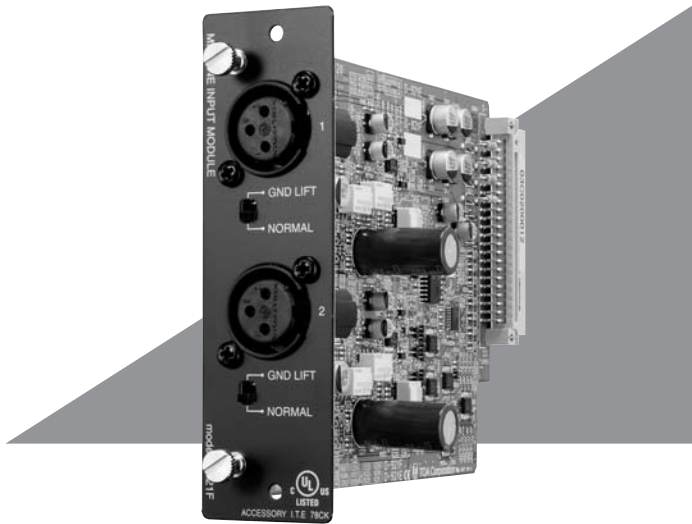


Delay

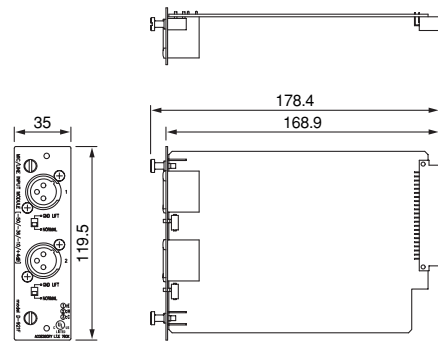
\* Download installation program from TOA's homepage (<http://www.toa-products.com/international/>) and save it to the desktop.

# D-921F

## Mic/Line Input Module (24 bits Monaural Type)



The D-921F is a dedicated 2-channel microphone/line input module designed for use with the D-901 Digital Mixer and equipped with XLR connectors. Input sensitivity and phantom power settings can be performed at the front panel.



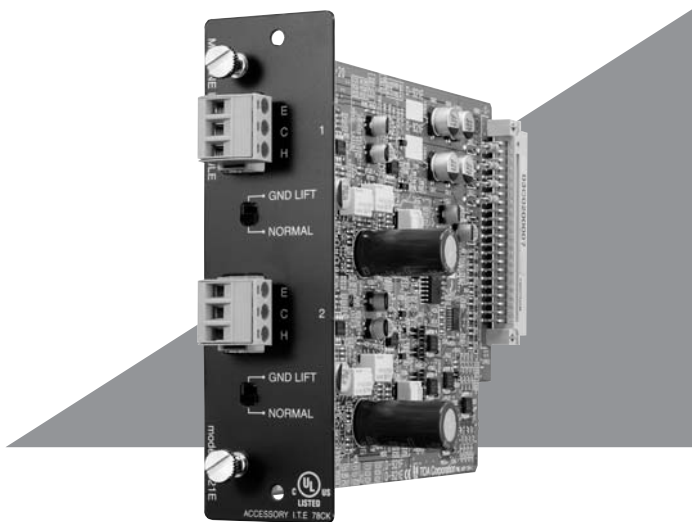
### SPECIFICATIONS

\* 0dB = 0.775V

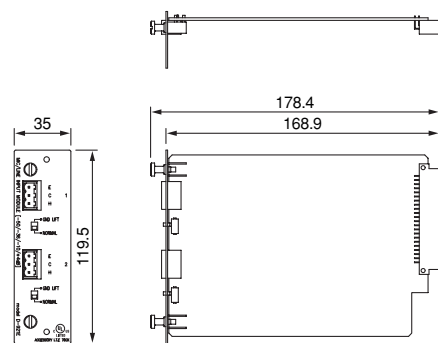
Model	D-921F
<b>Input</b>	2 channels, Mic/Line changeable Mic: -50/-36dB*, 4.7k $\Omega$ , electronically-balanced, equivalent to XLR-3-31 type Line: -10/+4dB*, 10k $\Omega$ , electronically-balanced, equivalent to XLR-3-31 type Phantom power supply (+15V, can be used when set for the microphone) Ground lift switch
<b>A/D Converter</b>	24 bits
<b>Frequency Response</b>	20-20,000Hz, $\pm 1$ dB (+4dB* input)
<b>Sampling Frequency</b>	48kHz
<b>Dynamic range</b>	Over 100 dB (IHF-A weighted) (+4dB* input)
<b>Total Harmonic Distortion</b>	Under 0.05% (+4dB* input)
<b>Finish</b>	Panel: Pre-coated steel plate, black, 30% gloss
<b>Dimensions</b>	35 (W) x 119.5 (H) x 178.4 (D) mm
<b>Weight</b>	150g

# D-921E

## Mic/Line Input Module (24 bits Monaural Type)



The D-921E is a dedicated 2-channel microphone/line input module designed for use with the D-901 Digital Mixer and equipped with removable terminal block type connectors. Input sensitivity and phantom power settings can be performed at the front panel.



### SPECIFICATIONS

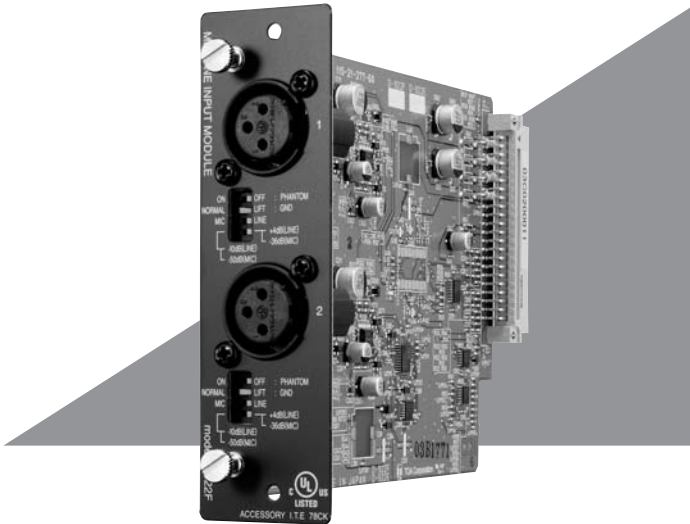
\* 0dB = 0.775V

Model	D-921E
<b>Input</b>	2 channels, Mic/Line changeable Mic: -50/-36dB*, 4.7k $\Omega$ , electronically-balanced, removable terminal block type connector Line: -10/+4dB*, 10k $\Omega$ , electronically-balanced, removable terminal block type connector Phantom power supply (+15V, can be used when set for the microphone) Ground lift switch
<b>A/D Converter</b>	24 bits
<b>Frequency Response</b>	20 - 20,000Hz, $\pm 1$ dB (+4dB* input)
<b>Sampling Frequency</b>	48kHz
<b>Dynamic range</b>	Over 100 dB (IHF-A weighted) (+4dB* input)
<b>Total Harmonic Distortion</b>	Under 0.05% (+4dB* input)
<b>Finish</b>	Panel: Pre-coated steel plate, black, 30% gloss
<b>Dimensions</b>	35 (W) x 119.5 (H) x 178.4 (D) mm
<b>Weight</b>	140g
<b>Accessory</b>	Removable terminal block type connector (preinstalled on the unit) x 2

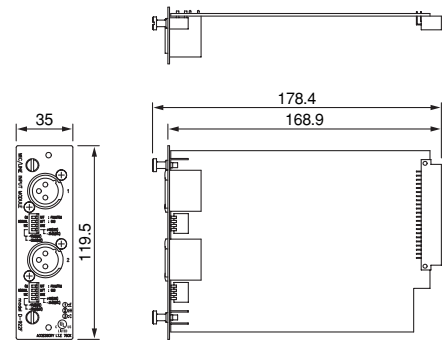


# D-922F

## Mic/Line Input Module (20 bits Monaural Type)



The D-922F is a dedicated 2-channel microphone/line input module designed for use with the D-901 Digital Mixer and equipped with XLR connectors. The D-901's 4-pole DIP switch is used to set the input sensitivity, phantom power supply, and ground lifting.



Unit: mm

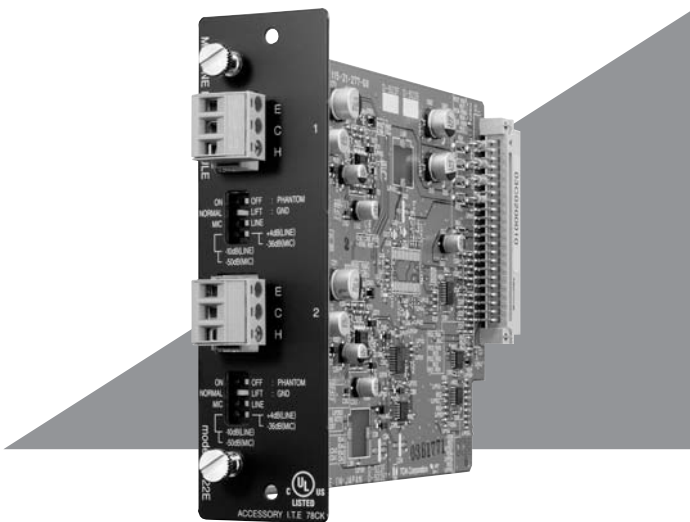
### SPECIFICATIONS

\* 0dB = 0.775V

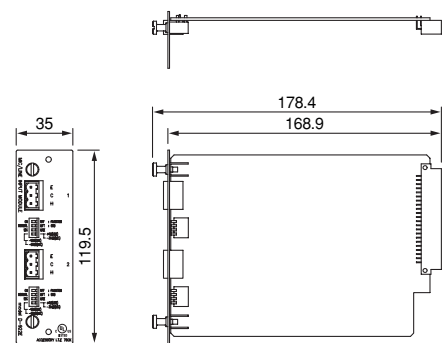
Model	D-922F
<b>Input</b>	2 channels, -50/-36/-10/+4dB* (Selectable with the DIP switch), 4.7kΩ, electronically-balanced, equivalent to XLR-3-31 type Phantom power supply (15V, can be set with DIP switch) Ground lift switch (can be set with the DIP switch)
<b>A/D Converter</b>	20 bits
<b>Frequency Response</b>	20 – 20,000Hz, ±1dB (+4dB* input)
<b>Sampling Frequency</b>	48 kHz
<b>Dynamic range</b>	Over 85dB (IHF-A weighted) (+4dB* input)
<b>Total Harmonic Distortion</b>	Under 0.2% (+4dB* input)
<b>Finish</b>	Panel: Pre-coated steel plate, black, 30% gloss
<b>Dimensions</b>	35 (W) x 119.5 (H) x 178.4 (D) mm
<b>Weight</b>	135g

# D-922E

## Mic/Line Input Module (20 bits Monaural Type)



The D-922E is a dedicated 2-channel microphone/line input module designed for use with the D-901 Digital Mixer and equipped with removable terminal block type connectors. The D-901's 4-pole DIP switch is used to set the input sensitivity, phantom power supply, and ground lifting.



Unit: mm

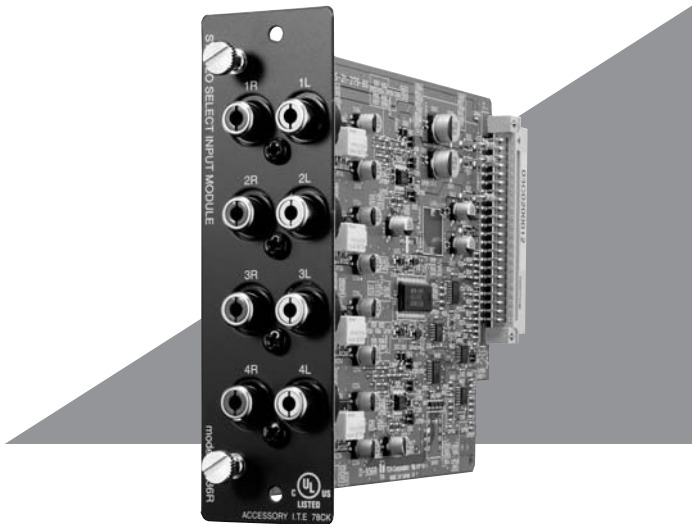
### SPECIFICATIONS

\* 0dB = 0.775V

Model	D-922E
<b>Input</b>	2 channels, -50/-36/-10/+4dB* (Selectable with the DIP switch), 4.7kΩ, electronically-balanced, removable terminal block type connector Phantom power supply (15V, can be set with the DIP switch) Ground lift switch (can be set with the DIP switch)
<b>A/D Converter</b>	20 bits
<b>Frequency Response</b>	20 – 20,000Hz, ±1dB (+4dB* input)
<b>Sampling Frequency</b>	48 kHz
<b>Dynamic range</b>	Over 85dB (IHF-A weighted) (+4dB* input)
<b>Total Harmonic Distortion</b>	Under 0.2% (+4dB* input)
<b>Finish</b>	Panel: Pre-coated steel plate, black, 30% gloss
<b>Dimensions</b>	35 (W) x 119.5 (H) x 178.4 (D) mm
<b>Weight</b>	125g
<b>Accessory</b>	Removable terminal block type connector (preinstalled on the unit) x 2

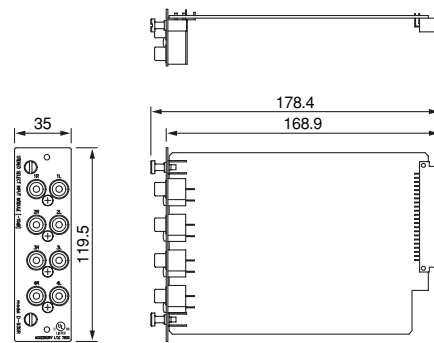
# D-936R

## Stereo Select Input Module



The D-936R is a dedicated 4 stereo input module designed for use with the D-901 Digital Mixer and equipped with standard RCA pin jacks. The D-936R features two stereo transmission modes:

- 1) Selection of one of the four stereo inputs for transmission to the D-901.
  - 2) Mixing of all four stereo inputs, transmitting the mixed signal to the D-901 through left/right channel outputs.
- Mode settings and stereo selection are performed on the front panel.



Unit: mm

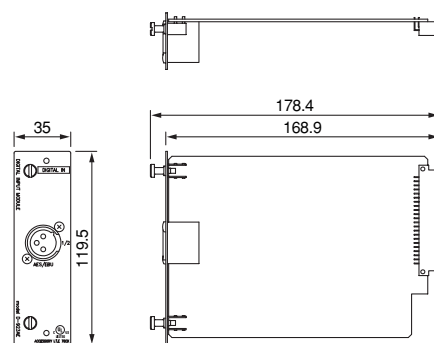
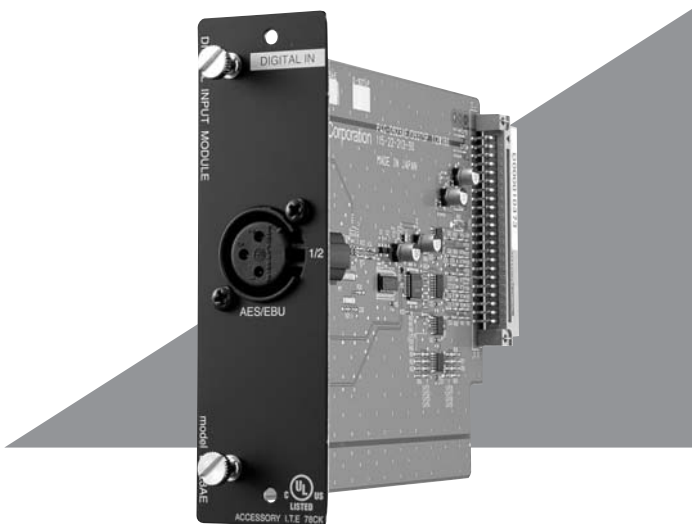
### SPECIFICATIONS

\* 0dB = 0.775V

Model	D-936R
<b>Input</b>	4 stereo inputs (selection of 1 stereo or mixing of all 4 stereo inputs) -10dB*, 10Ω, RCA pin jack
<b>A/D Converter</b>	24 bits
<b>Frequency Response</b>	20 – 20,000Hz, ±1 dB (+4dB* input)
<b>Sampling Frequency</b>	48 kHz
<b>Dynamic range</b>	Over 100dB (IHF-A weighted)
<b>Total Harmonic Distortion</b>	Under 0.05%
<b>Finish</b>	Panel: Pre-coated steel plate, black, 30% gloss
<b>Dimensions</b>	35 (W) x 119.5 (H) x 178.4 (D) mm
<b>Weight</b>	145g

# D-923AE

## Digital Input Module



Unit: mm

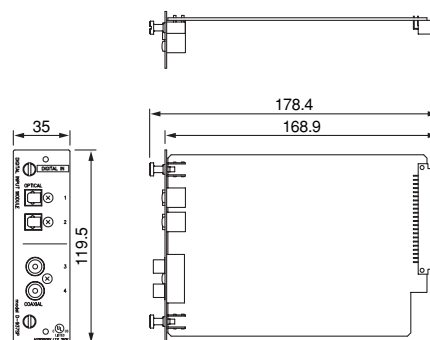
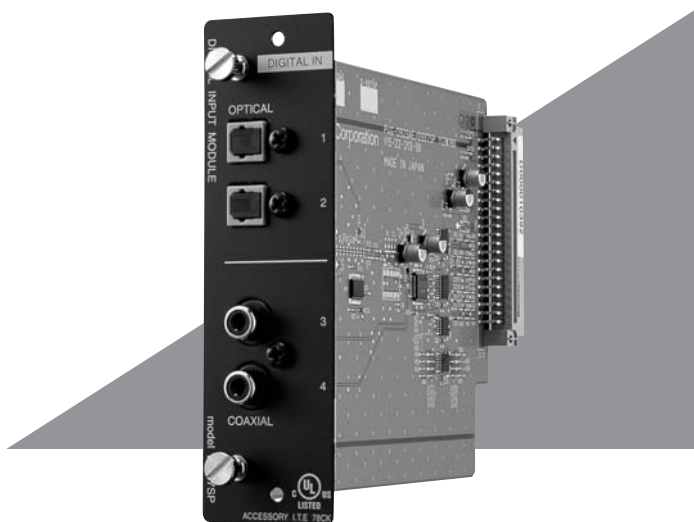
The D-923AE is a dedicated 2-channel line digital input module designed for use with the D-901 Digital Mixer. With the use of this module, digital signals can be input, permitting direct connection of the D-901 digital Mixer to equipment having a digital output. Owing to the built-in sample rate converter, the module can handle signals of various sampling frequencies.

### SPECIFICATIONS

Model	D-923AE
<b>Input</b>	2 channels, 2.0 – 7.0V (p-p), 110Ω, XLR-3-31 or equivalent
<b>Applicable Format</b>	AES/EBU (2 channel multiplexed)
<b>Sampling Frequency</b>	32 – 48kHz
<b>Finish</b>	Panel: Pre-coated steel plate, black, 30% gloss
<b>Dimensions</b>	35 (W) x 119.5 (H) x 178.4 (D)mm
<b>Weight</b>	130g

# D-937SP

## Digital Input Module



Unit: mm

The D-937SP is a dedicated 1 stereo channel line digital input module designed for use with the D-901. With the use of this module, digital signals can be input, permitting direct connection of the D-901 Digital Mixer to equipment having a digital output. Owing to the built-in sample rate converter, the module can handle signals of various sampling frequencies. When this module is used, one of four stereo inputs is selected for output to the D-901. Input selection can be performed at the front panel, by PC software or through a remote control module.

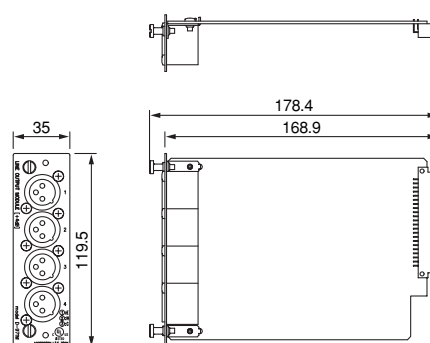
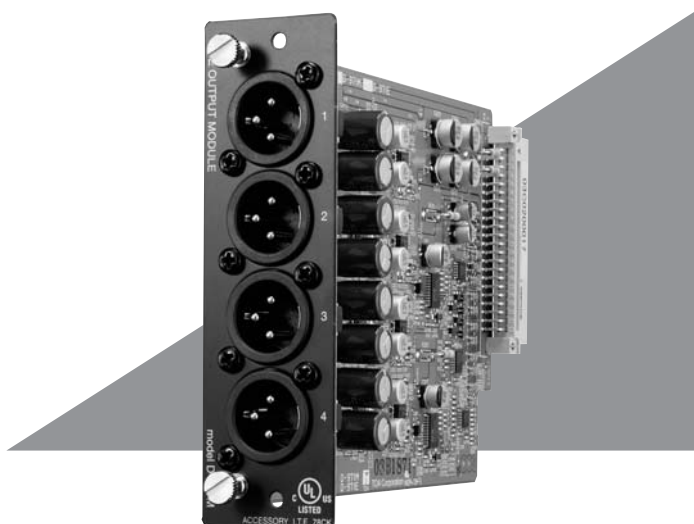
### SPECIFICATIONS

Model	D-937SP
<b>Input</b>	Stereo 1 channel line (Selectable one of four inputs) 0.5V (p-p), 75Ω, Coaxial RCA jack x 2 Square optical connector x 2
<b>Applicable Format</b>	S/PDIF (2 channel multiplexed)
<b>Sampling Frequency</b>	32 – 48kHz
<b>Finish</b>	Panel: Pre-coated steel plate, black, 30% gloss
<b>Dimensions</b>	35 (W) x 119.5 (H) x 178.4 (D)mm
<b>Weight</b>	130g

# D-971M

## Line Output Module

\*The D-901 accepts up to nine modules but only two line output modules may be used at the same time.



Unit: mm

The D-971M is a dedicated 4-channel line output module designed for use with the D-901 Digital Mixer and equipped with XLR connectors.

### SPECIFICATIONS

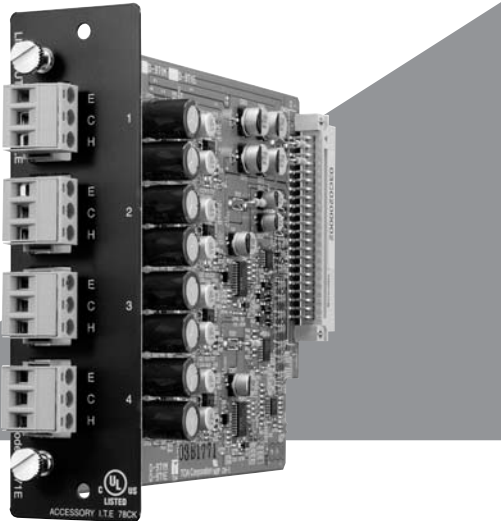
\* 0dB = 0.775V

Model	D-971M
<b>Output</b>	4 channels, +4 dB*, adaptable load of over 600Ω, electronically-balanced, equivalent to XLR-3-32 type
<b>D/A Converter</b>	24 bits
<b>Frequency Response</b>	20 – 20,000 Hz, ±1 dB
<b>Sampling Frequency</b>	48kHz
<b>Dynamic range</b>	Over 100dB (IHF-A weighted)
<b>Total Harmonic Distortion</b>	Under 0.05%
<b>Finish</b>	Panel: Pre-coated steel plate, black, 30% gloss
<b>Dimensions</b>	35 (W) x 119.5 (H) x 178.4 (D)mm
<b>Weight</b>	165g

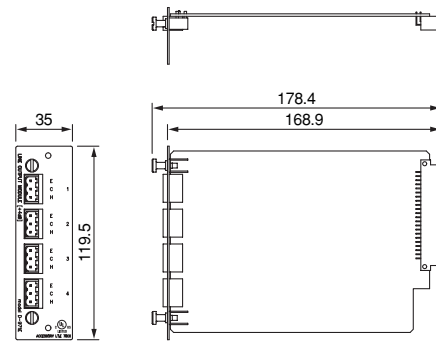
# D-971E

## Line Output Module

\*The D-901 accepts up to nine modules but only two line output modules may be used at the same time.



The D-971E is a dedicated 4-channel line output module designed for use with the D-901 Digital Mixer and equipped with removable terminal block type connectors.



Unit: mm

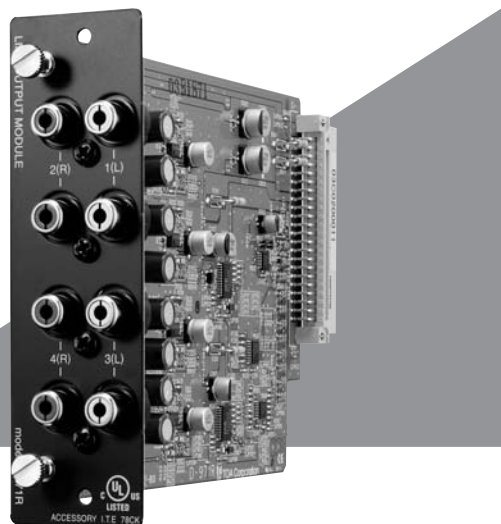
### SPECIFICATIONS

\* 0dB = 0.775V

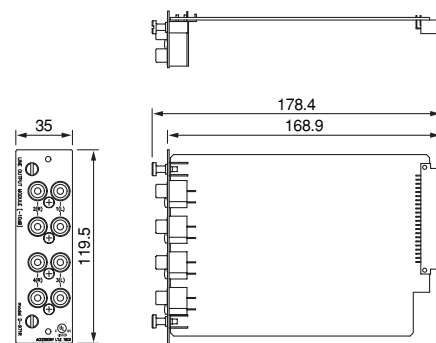
Model	D-971E
Output	4 channels, +4dB*, adaptable load of over 600Ω, electronically-balanced, removable terminal block type connector
D/A Converter	24 bits
Frequency Response	20 – 20,000 Hz, ±1 dB
Sampling Frequency	48kHz
Dynamic range	Over 100dB (IHF-A weighted)
Total Harmonic Distortion	Under 0.05%
Finish	Panel: Pre-coated steel plate, black, 30% gloss
Dimensions	35 (W) x 119.5 (H) x 178.4 (D)mm
Weight	140g
Accessory	Removable terminal block type connector (preinstalled on the unit) x 4

# D-971R

## Line Output Module



The D-971R is a dedicated 4-channel line output module designed for use with the D-901 Digital Mixer and equipped with standard RCA pin jacks.



Unit: mm

### SPECIFICATIONS

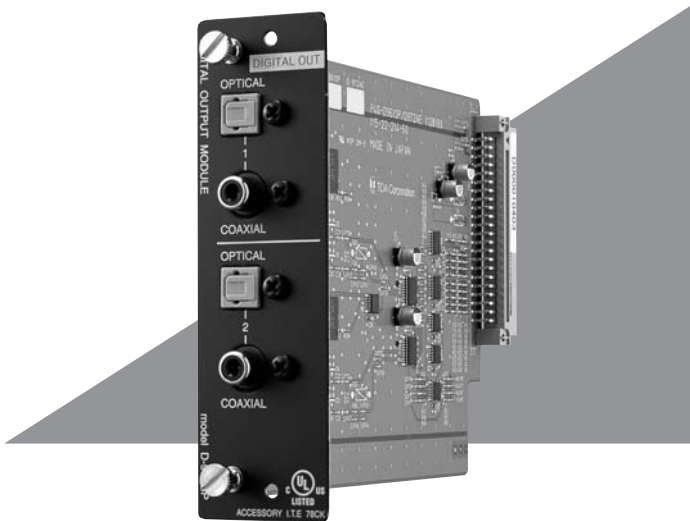
\* 0dB = 0.775V

Model	D-971R
Output	4 channels (2 outputs for each channel), -10dB*, adaptable load of over 600Ω, RCA pin jack
D/A Converter	24 bits
Frequency Response	20 – 20,000 Hz, ±1 dB
Sampling Frequency	48kHz
Dynamic range	Over 100dB (IHF-A weighted)
Total Harmonic Distortion	Under 0.05%
Finish	Panel: Pre-coated steel plate, black, 30% gloss
Dimensions	35 (W) x 119.5 (H) x 178.4 (D)mm
Weight	150g

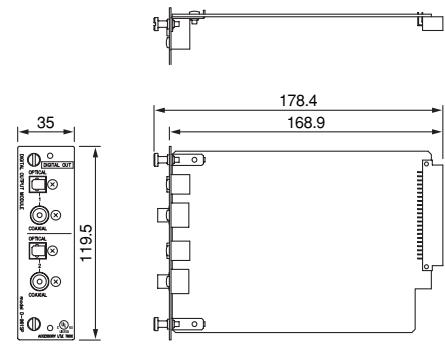


# D-961SP

## Digital Output Module



The D-961SP is a dedicated Stereo 2 channel line digital output module designed for use with the D-901 Digital Mixer. With the use of this module, digital signals can be output, permitting direct connection of the D-901 Digital Mixer to equipment having a digital input. Each pair of optical output and coaxial output is output in parallel.



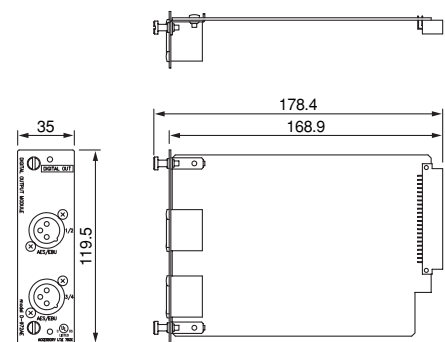
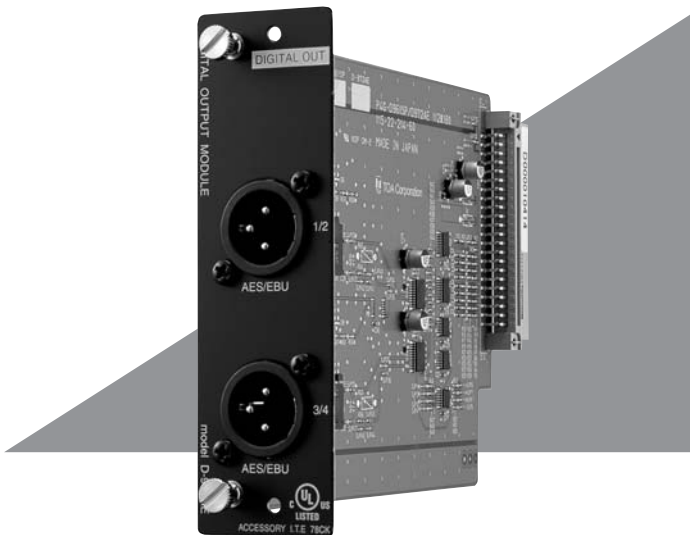
Unit: mm

### SPECIFICATIONS

Model	D-961SP
<b>Output</b>	Stereo 2 channel line (with splitter, can be output to each pair of optical output and coaxial output in Parallel), 0.5V (p-p), 75Ω, Coaxial RCA jack x 2, Square optical connector x 2
<b>Applicable Format</b>	S/PDIF (2 channel multiplexed)
<b>Sampling Frequency</b>	48kHz
<b>Finish</b>	Panel: Pre-coated steel plate, black, 30% gloss
<b>Dimensions</b>	35 (W) x 119.5 (H) x 178.4 (D)mm
<b>Weight</b>	130g

# D-972AE

## Digital Output Module



Unit: mm

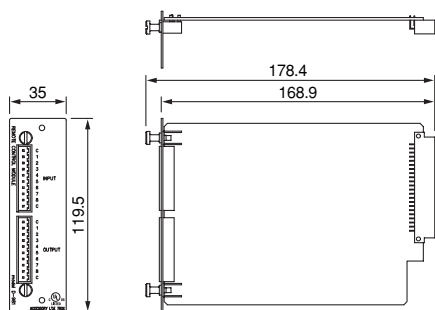
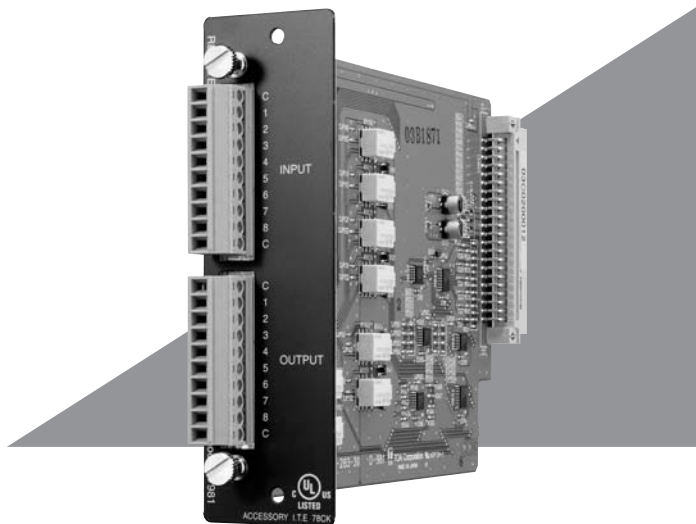
The D-972AE is a dedicated 4-channel line digital output module designed for use with the D-901 Digital Mixer. With the use of this module, digital signals can be output, permitting direct connection of the D-901 Digital Mixer to equipment having a digital input.

### SPECIFICATIONS

Model	D-972AE
<b>Output</b>	4 channels, 5.0V (p-p), 110Ω, XLR-3-32 or equivalent x 2
<b>Applicable Format</b>	AES/EBU (2 channel multiplexed)
<b>Sampling Frequency</b>	48kHz
<b>Finish</b>	Panel: Pre-coated steel plate, black, 30% gloss
<b>Dimensions</b>	35 (W) x 119.5 (H) x 178.4 (D)mm
<b>Weight</b>	130g
<b>Accessory</b>	Ferrite clamp x 2

# D-981

## Remote Control Module



Unit: mm

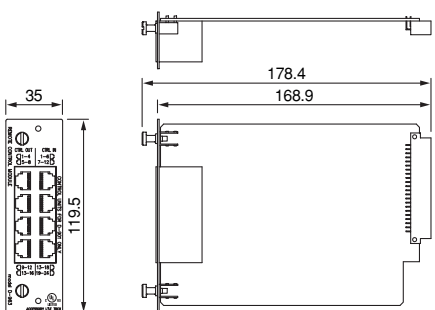
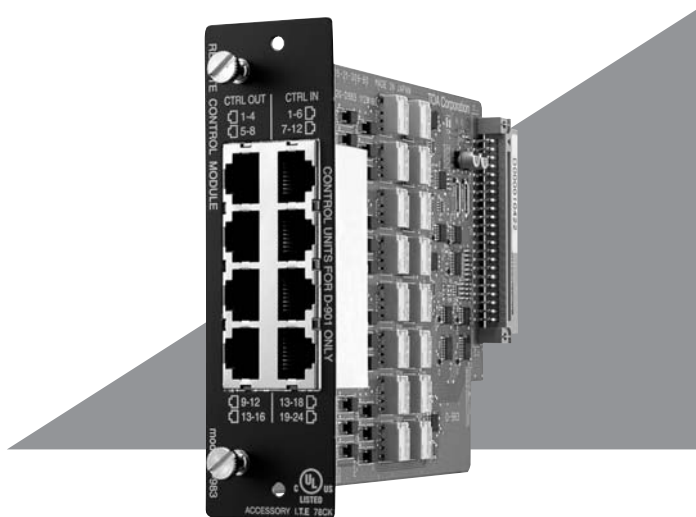
The D-981 is a dedicated remote control module designed for use with the D-901 Digital Mixer. It permits preset memory recall, input/output channel volume control, stereo input selection and channel ON/OFF operation to be remotely controlled from external equipment. Tally output can also be provided for external control.

### SPECIFICATIONS

Model	D-981
<b>Contact input</b>	COM + terminals 1 – 8: Open voltage: 5V DC, short-circuit current: 5mA removable terminal block type connector
<b>Control</b>	
<b>Preset memory selection</b>	Any preset memory can be recalled. Control method: No-voltage make of over 100ms/ no-voltage make single pulse of over 100ms
<b>Volume control</b>	Any input/output channel volume can be turned UP or DOWN. Control Method: 1 step variation for no-voltage make single pulse of over 100ms 1 step continuous operation for every 70ms for no-voltage make of over 100ms. Can be reset when at break. Variable Range: $-\infty$ dB to +10dB
<b>Channel</b>	Any input/output channels can be turned ON and OFF. Control method: No-voltage make of over 100ms/ No-voltage make single pulse of over 100ms
<b>Stereo selection</b>	Input channel lines of the D-936R (optional), or the D-937SP (optional) (4 stereo input module) can be selected. Control method: No-voltage make of over 100ms/ No-voltage make single pulse of over 100ms
<b>Contact output</b>	COM + terminals 1 – 8: No-voltage make contact input, contact capacity: 24V DC, 100mA removable terminal block type connector
<b>Finish</b>	Panel: Pre-coated steel plate, black, 30% gloss
<b>Dimensions</b>	35 (W) x 119.5 (H) x 178.4 (D)mm
<b>Weight</b>	125g
<b>Accessory</b>	Removable terminal block type connector (preinstalled on the unit) x 2

# D-983

## Remote Control Module



Unit: mm

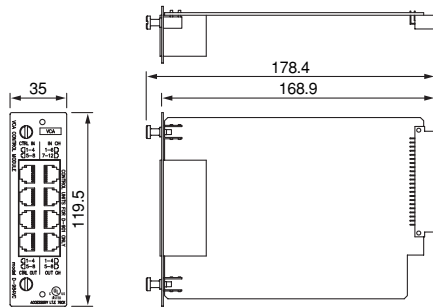
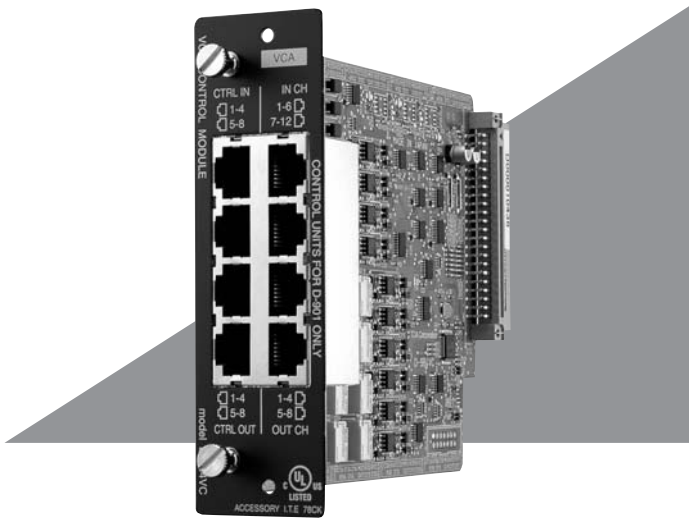
The D-983 is a dedicated remote control module designed for use with the D-901 Digital Mixer. It permits preset memory recall, input/output channel volume control, stereo input selection and channel ON/OFF operation to be remotely controlled from external equipment. Tally output can also be provided for external control.

### SPECIFICATIONS

Model	D-983
<b>Contact input</b>	COM + terminals 1 – 24: Open voltage: 5V DC, short-circuit current: 5mA, RJ45 connector x 4
<b>Control</b>	
<b>Preset memory selection</b>	Any preset memory can be recalled. Control method: No-voltage make of over 100ms/ No-voltage make single pulse of over 100ms
<b>Volume</b>	Any input/output channel volume can be turned UP or DOWN. Control Method: 1 step variation for no-voltage make single pulse of over 100ms 1 step continuous operation for every 70ms for no-voltage make of over 100ms. Can be reset when at break. Variable Range: $-\infty$ dB to +10dB
<b>Channel</b>	Any input/output channel can be turned ON and OFF. Control method: No-voltage make of over 100ms/ No-voltage make single pulse of over 100ms
<b>Stereo selection</b>	Input channel lines of the D-936R (optional), or the D-937SP (optional) (4 stereo input module) can be selected. Control method: No-voltage make of over 100ms/ No-voltage make single pulse of over 100ms
<b>Contact output</b>	COM + terminals 1 – 16: No-voltage make contact, contact capacity: 24V DC, 100mA, RJ45 connector x 4
<b>Finish</b>	Panel: Pre-coated steel plate, black, 30% gloss
<b>Dimensions</b>	35 (W) x 119.5 (H) x 178.4 (D)mm
<b>Weight</b>	170g

# D-984VC

## VCA Control Module



Unit: mm

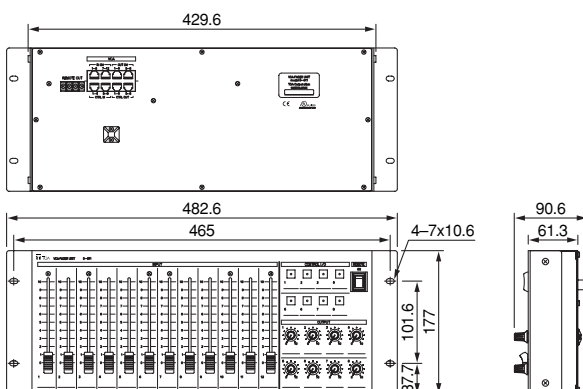
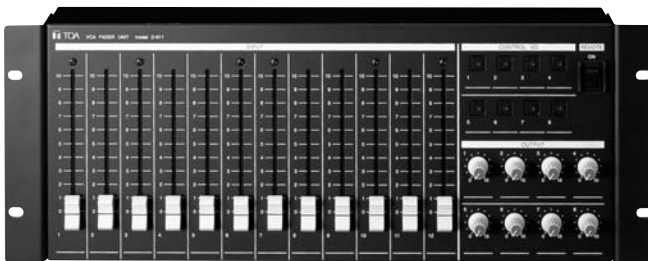
The D-984VC is a dedicated VCA control module designed for use with the D-901 Digital Mixer. It expands the D-901 Digital Mixer's functions by 20 VCA control inputs, 8 contact inputs, and 8 contact outputs. By the VCA controls from external equipment, this module permits the D-901's gains of 12 inputs and 8 outputs to be controlled. By the contact input controls from external equipment, this module permits the preset memory recall, input/output channel gains, stereo input selection, and channel ON/OFF to be controlled. By the contact output controls, tally outputs can also be provided for external control.

### SPECIFICATIONS

Model	D-984VC
<b>VCA Control Input</b>	+5V, GND, Terminal 1 – 20 (12 input channels, 8 output channels), RJ45 connector x 4 Control contents: Volume control of each input/output channel Variable range: $-\infty$ dB to +0dB
<b>Contact Input</b>	COM + Terminal 1 – 8: Open voltage: 5V DC, short-circuit current: 5mA, RJ45 connector x 2
<b>Control Preset Memory Selection</b>	Any preset memory can be recalled. Control method: No-voltage make of over 100ms/ No-voltage make single pulse of over 100ms
<b>Volume</b>	Any input/output channel volume can be turned UP or DOWN. Control Method: 1 step variation for no-voltage make single pulse of over 100ms/ 1 step continuous operation for every 70ms for no-voltage make of over 100ms. Can be reset when at break. Variable Range: $-\infty$ dB to +10dB
<b>Channel</b>	Any input/output channel can be turned ON and OFF. Control method: No-voltage make of over 100ms/ No-voltage make single pulse of over 100ms
<b>Stereo Selection</b>	Input channel lines of the D-936R (optional), or the D-937SP (optional) (4 stereo input module) can be selected. Control method: No-voltage make of over 100ms/ No-voltage make single pulse of over 100ms
<b>Contact Output</b>	COM + Terminals 1 – 8: No-voltage make contact, contact capacity: 24V DC, 100mA, RJ45 connector x 2
<b>Finish</b>	Panel: Pre-coated steel plate, black, 30% gloss
<b>Dimensions</b>	35 (W) x 119.5 (H) x 178.4 (D)mm
<b>Weight</b>	170g

# D-911

## VCA Fader Unit

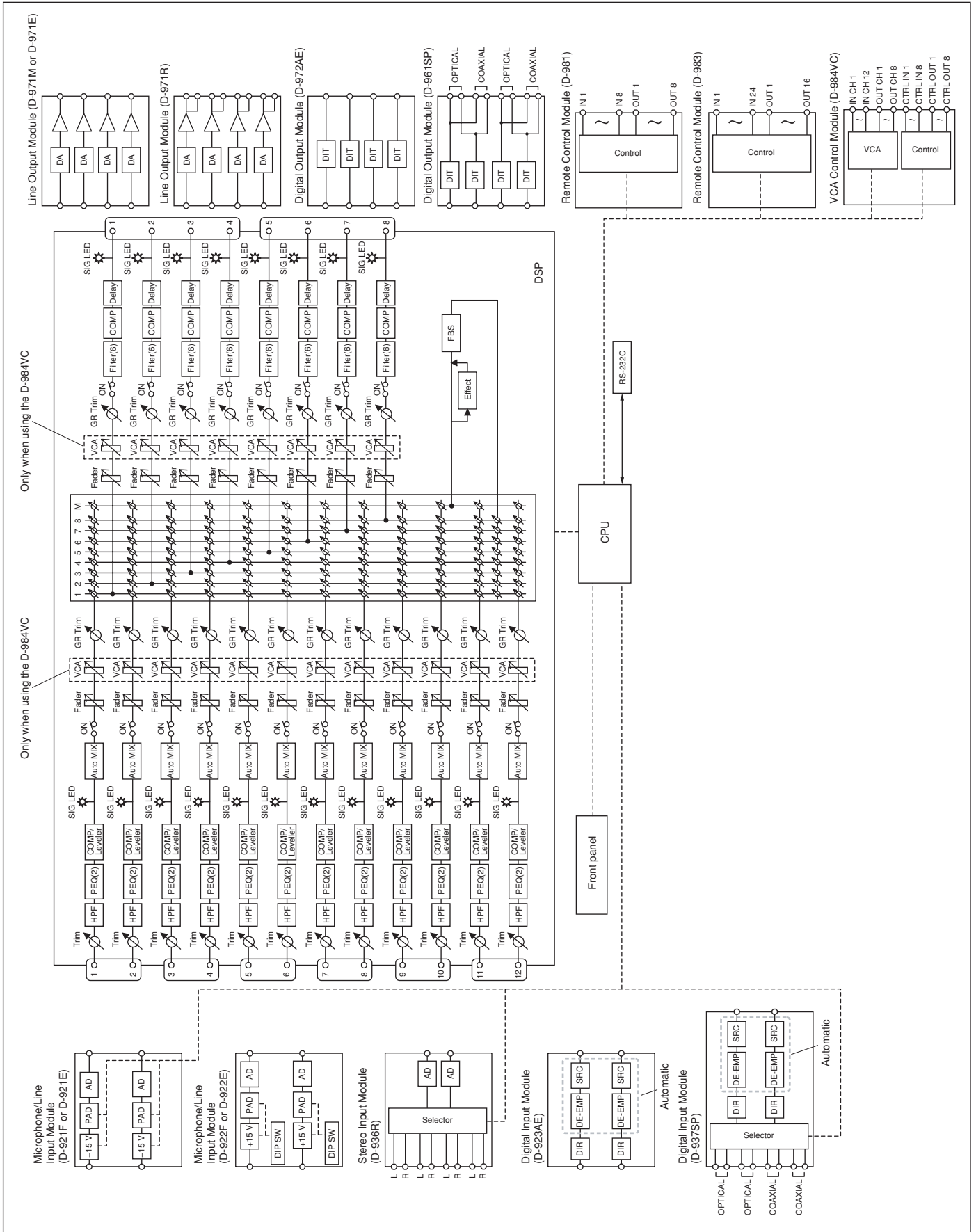


Unit: mm

The D-911 is a dedicated VCA fader unit designed for use with the D-901 Digital Mixer. Connecting the D-911 to the D-984VC, VCA control module permits the volume control of all channels and contact controls.

### SPECIFICATIONS

Model	D-911
<b>Power Supply</b>	5V DC (supplied from the optional D-984VC)
<b>Connector</b>	RJ45 connector x 8
<b>Input Fader Control</b>	Input fader (100mm) x 12
<b>Output Volume Control</b>	Output volume control x 8
<b>Contact Control</b>	Illuminated switch x 8
<b>Remote Output</b>	No-voltage make contact output (contact capacity: 30V DC, 4A)
<b>Remote Switch</b>	Seesaw switch for activating the remote function of the power distributor
<b>Finish</b>	Panel: Pre-coated steel plate, black, 30% gloss
<b>Dimensions</b>	482.6 (W) x 177 (H) x 61.3 (D)mm (excluding projection)
<b>Weight</b>	2.7kg
<b>Accessory</b>	Fader knob (Red, Yellow) x 3 each, Volume knob (Red) x 2, Rack mounting screw x 4, Rack mounting fiber washer x 4, Rack mounting bracket (preinstalled on the unit) x 2



TOA Corporation

<http://www.toa.jp/>



Specifications are subject to change without notice.  
Printed in Japan (0501) 833-52-303-1A U