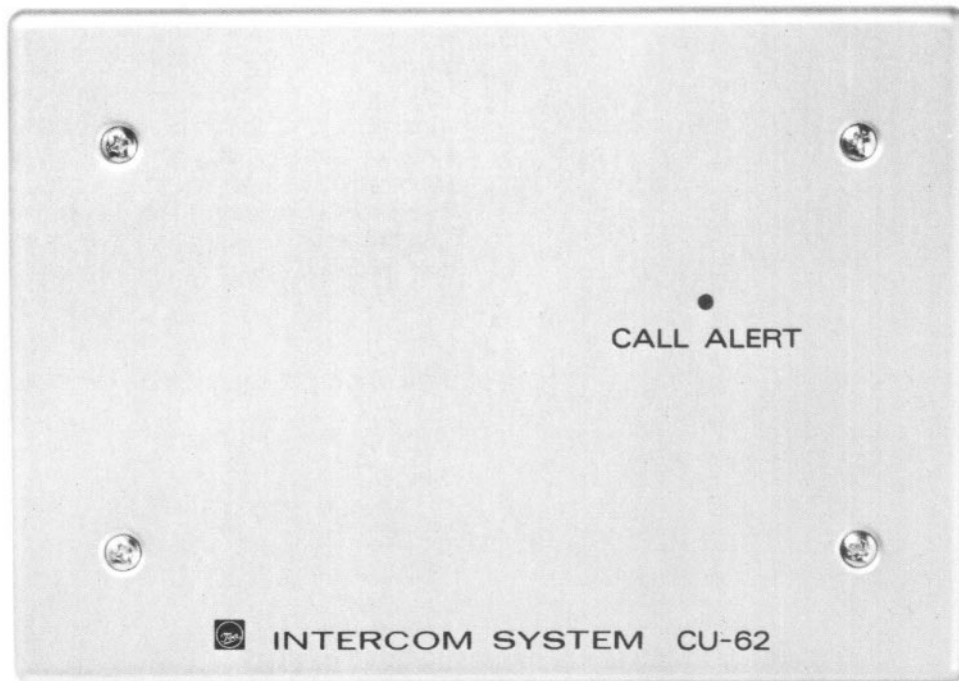


EXES-6000

CU-62 CALL ALERT RELAY UNIT



CALL ALERT RELAY UNIT
(CU-62)

Features

1. Flush or surface mountable with optional back box.
2. Activation of external visual or audio call indicators through synchronization with call tones.
3. Call indicator LED.
4. Two relay output contacts.
5. Call tone duration adjustment.

General Description

The CU-62 call alert relay unit is designed for use with the TOA EXES-6000 intercom systems. It is provided with 2 relay output contacts which sense incoming calls to the station and activate such external call indicators as lamps and buzzers, signalling to the people in high noise level areas

who otherwise fail to notice the incoming calls. The relay remains activated for a maximum of 2 seconds for a single incoming call tone, or continuously for duration of the continuous incoming call tone, and causes the external indicators to operate.

Specifications

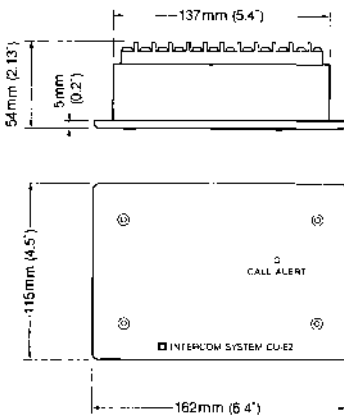
Supply voltage:	24V DC (22V to 28V)
Current consumption:	Max. 0.08A
Controls:	Two-relay output contacts
Rated relay contact capacity:	0.5A (24V DC)
Adjustments:	<ul style="list-style-type: none"> •Relay activated duration— Max. 2.0 sec. (full clockwise) •Activated sensitivity
Finish:	Brushed aluminum front panel
Associated equipment:	DS-100 (DC power supply unit) YC-150 (flush-mounted back box) YS-13 (surface-mounted back box)
Weight:	570g (1.26 lbs.)
Dimensions:	See the Dimensional Diagram as below.

Architects and Engineers Specifications

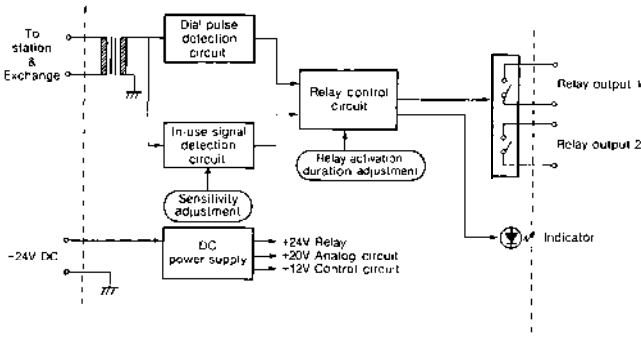
The call alert relay unit shall be TOA model CU-62. The call alert relay unit shall be designed for use with the TOA EXES-6000 series intercom systems, and shall be capable of activating external lamps, buzzers or other external call indicators by responding to the station call tone. The call alert relay unit shall be operated on 24V DC, and shall have a rated contact capacity of 0.5A (24 DC). It shall also be equipped with a "call alert" indicator for quick monitoring of the relay activation. The relay shall remain activated for a maximum of 2 seconds for a single incoming call tone, or continuously for duration of the continuous incoming call tone, and shall cause the external indicators to operate. The call alert relay unit shall be either surface mounted or flush mounted in the wall and its panel shall be finished with brushed aluminum.

Dimensional Diagram

CU-62



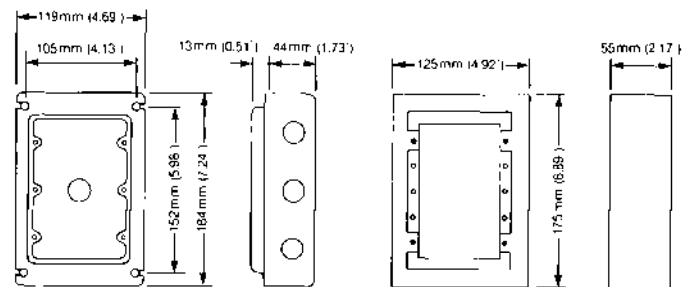
Block Diagram



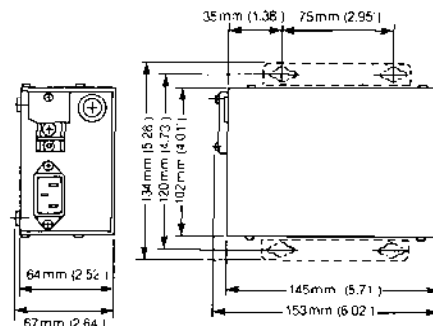
Dimensional Diagram of Associated Equipment

YC-150

YS-13



DS-100



Specifications are subject to change without notice.



TOA Electronics, Inc., 601 Gateway Boulevard
South San Francisco, California 94080
Telephone: (415) 588-2538
FAX: (415) 588-3349