

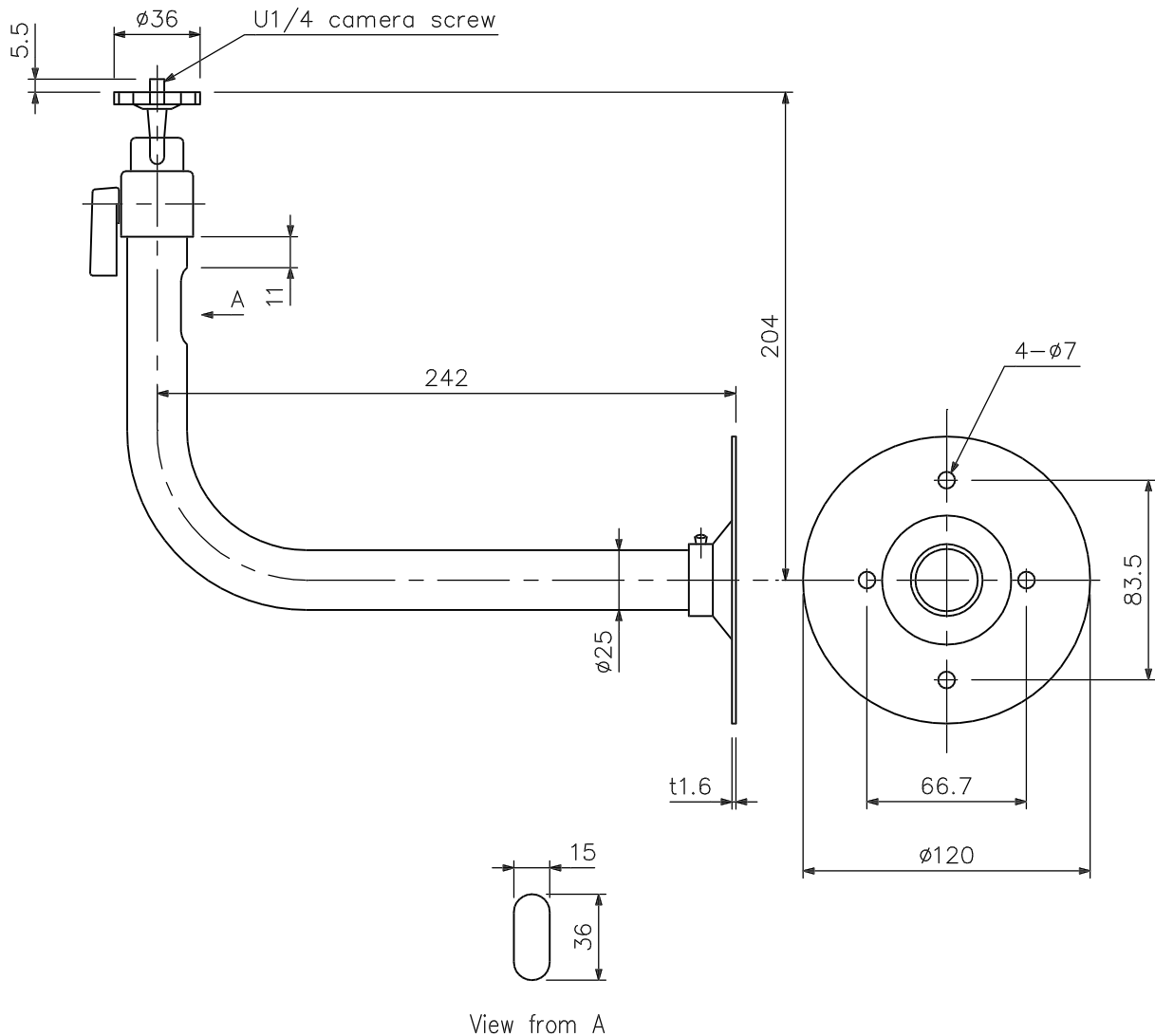
DESCRIPTION

Made of light metal and fitted with a rotatable camera pedestal the C-BC21 is an extensible mounting device for mounting an ITV camera to the ceiling or wall. Since a BNC plug and co-axial cable can pass through the C-BC21's pipe, wiring looks quite neat.

SPECIFICATIONS

Permissible Load	4 kg
Angle Adjustment	Horizontal: +90 ° - -15 ° Vertical: 360 °
Applications	Indoor use
Finish	Pipe: Aluminium, painted metallic silver Camera pedestal: ABS resin, sand gray Other parts: metallic silver
Weight	340 g
Accessory	Fixing screw...4

APPEARANCE



UNIT:mm SCALE:1/3