



## IP Network Intercom N-8000 Series

The **N-8000 IP Network Intercom** offers scalable communications over data networks, with **configurations of up to 1,280 stations**, and a maximum bandwidth of 130 kilobits per second on a station to station call. Building on TOA's successful NX-100 network audio technology, the **N-8000 Systems** are ideal for secure communications in corporate, educational and medical applications. The **N-8000 integrates easily with access control and video surveillance equipment.**

- Scalable network communications for up to 1280 stations over data networks (LAN/WAN)
- Flexible configuration options for existing cabling and network infrastructure
- Station Options:
  - IP Stations with Ethernet port connect directly to the network (up to 80 stations)
  - Connect up to sixteen two-wire stations to compact Network Exchange (up to 80 exchanges for up to 1,280 stations)
- Occupies minimal network bandwidth — 130 kbps max. (station to station call)
- Hands-free full-duplex conversation
- Control and monitor through software and web browser
- Versatile features including 160 zone paging, time-based call forwarding and scan monitoring

### IP Stations Connect Directly to the Network!

**N-8500MS** IP Network Master Station with LCD Display

- Connects directly to LAN/WAN
  - 32 character alphanumeric LCD display, handset and speed dial functions
  - Power-over-Ethernet (POE) compatible
- N-8540DS** IP Network Door Station and **Q-N8540WP** Outdoor IP Substation
- Connects directly to LAN/WAN
  - Vandal-resistant call-switch
  - Control output for door release
  - Power-over-Ethernet (POE) compatible

### Two-Wire Station Options\* Components

- N-8000MS** Multifunction Master Station with LCD Display
- N-8010MS** Standard Master Station
- N-8011MS** Hands-free Master Station
- N-8020MS** Industrial Master Station
- N-8031MS** Flush-Mount Hands-free Master Station
- N-8040DS** Flush-Mount Vandal-Resistant Door Station
- Q-N8050WP** Outdoor Substation

\*Connect to N-8000EX or N-8010EX IP Network Exchanges.

See N-8000 Specification for a complete listing of products and accessories.

### System

- N-8000EX** IP Network Exchange (16-Station, four speech links, paging port)
- N-8010EX** IP Network Exchange (16-Station, one speech link)
- N-8000MI** Multi-Interface (PBX, BGM, control I/O, legacy EXES)



## Security Intercom VS-900

Ideal for applications with multiple "sub" stations calling to one or more "master" stations, the **VS-900** has a wide range of standard and programmable features. Comprehensive call-forwarding allows users freedom of movement and ensures that no call goes unanswered. The **VS-900 integrates easily with access control and video surveillance equipment.**

- For critical applications such as corporate, correctional, educational, government, military, parking structures, police, and more
- "Sub-to-Master" and "Master-to-Master" station communication
- User-friendly installation, setup and maintenance
- Modular design, scalable for cost-effective system configurations
- Flexible programming and control software for setup and maintenance of multiple exchanges from one PC, remotely via modem or via network
- Security system integration - communication protocol available for remote control and monitoring of intercom system functions from external devices
- Comprehensive call-forwarding features: Time-based, No-Answer, Busy and C/O line to prevent unanswered calls and allow attendant mobility
- Recording Outputs, Event Logging, and more

### Station Capacity

- Single Exchange: 4 Master Stations and 64 Sub-Stations
- Up to 16 Tie-lined Exchanges: 64 Master stations and 1,024 Sub-stations



CCTV AND INTERCOM COMMUNICATION PRODUCTS

**INTERCOM**  
Our N-8000 Series IP Network Intercom systems support up to 1,280 intercom stations over existing data networks.

**VIDEO**  
Our wide range of video surveillance products includes network cameras, digital video recorders and much more.

**AUDIO**  
Our industry-standard rugged and reliable commercial audio products include digital amplifiers, paging speakers and telephone zone paging.

**Three Technologies. One Source.**

When your project calls for installing video surveillance, intercom and audio, TOA's one-stop shopping can make life easier. Thought we *only* offered rock-solid amps and speakers? Hardly! We've been a global leader in security solutions for over twenty years—which has given us a pretty good head start when it comes to bringing security technologies into the Internet age. Check out our new IP network-ready cameras, DVRs and intercom systems. They're easy to install, in stock, and priced right. You may know us for our amps and speakers, now get to know us for our industry-leading security products.

## RESOURCES

- CCTV Selection guide
- CCTV Training Textbook
- Security A&E Specification Guide
- CCTV Viewer Simulation Software

Visit us online at [www.TOACanada.com](http://www.TOACanada.com)

### TOA Canada Corporation

6150 Kennedy Road • Unit 3 • Mississauga • ON • L5T 2J4

[www.TOACanada.com](http://www.TOACanada.com)

Tel: 1.800.263.7639

Fax: 1.800.463.3569

Specifications are subject to change without notice.

Ver: 1.1

# CCTV and Intercom Communication Products by TOA



IP Network Camera Systems



Network & Digital Video Recorders



PTZ Combination Dome Cameras



Vandal Resistant Cameras



Compact Colour Cameras



Infrared Cameras



Network Intercom Systems



Security Intercom Systems

safe & sound

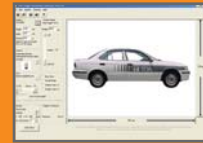


TOA

## NETCANSEE

### Features - Network Camera System

- Facilitates configuring remote surveillance and remote control systems.
- Utilizing existing IP infrastructure cuts down on cabling costs and frees up space that cable installations would require
- Allows integration into other systems such as IP intercom systems
- Able to simultaneously control devices and transmit audio bi-directionally together with images, minimizing cable use.
- Total system versatility for system expansion, adaptability and flexibility
- High quality regardless of TV signal types
- No image degradation or audio deterioration because transmission is digital
- Browser control



**CCTV Viewer Simulation Software**

### N-CC2360

#### network colour camera

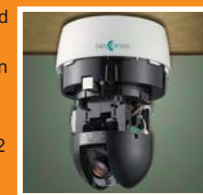
- Wide dynamic range with day/night function
- 1/3-Inch CCD with 500 TVL resolution and CS lens mounting
- High Sensitivity: 0.5 lux (Color Mode)/0.01 lux (B/W Mode)
- PoE capability simplifies connectivity requiring just a single LAN cable
- 24V AC or 24V DC operation is possible
- The built-in microphone and audio output terminal allows bidirectional audio transmission
- Analog signal output terminal for connecting a monitor display
- Contact output x 2; Contact input x 2



### N-CC2564

#### network combination PTZ dome camera

- Wide dynamic range with day/night function
- 1/4-Inch CCD with 480 TVL resolution
- All-in-one model equipped with 23X optical and 12 electronic zooms, capable of 255 preset camera positions
- Rotation range: horizontal 360° continuous; vertical +5° to 185°
- High-speed horizontal and vertical rotations of up to 360°/sec
- Maximum of 8 locations can be designated for privacy masking
- Protocol for absolute coordinate designation
- Bi-directional audio transmission (line input x 1; line output x 1)
- Alarm input x 8; auxiliary contact output x 2
- Power source: 24V AC



### N-VT2010

#### network video transmitter

- Connection for analog camera to digitally transmit images on a network
- Allows displaying digital image data from a network camera or network video transmitter on an analog monitor screen
- Transports composite video, audio, RS-232, RS-485 and contact closures over IP networks
- Bi-directional audio transmission (mic/line input x 1; line output x 1)
- RS-232C x 1; RS-485 x 1 allows remote control of DVRs and Combination Dome Cameras
- PoE capability simplifies connectivity requiring just a single LAN cable
- 24V AC or 24V DC operation possible
- Contact input x 2; Contact output x 2
- 12V DC Power Supply for CV Cameras or other devices



**N-VR2010 network video receiver**

## Network Video Recorder

### N-DR2000

- Records video and audio of network cameras & network video transmitter
- Store MPEG-4 and JPEG images plus Audio; max. 240fps (JPEG, VGA)
- Ongoing digital images (JPEG formats) and audio (Sub-band ADPCM, PCM) are recorded
- Simultaneous recording of data from up to 16 cameras and transmitters. (Playback up to 8 recorded data)
- Recorded data is converted into a database to allow high-speed searching and viewing
- Search modes: day/time, block, search fine-tuning alarm, motion detection
- Distributing recorded data to multiple locations
- Web, FTP, NTP, SMTP (mail) and DHCP server capabilities
- Browser-based setup
- System-wide time synchronization by NTP server
- Highly reliable Linux OS.
- HDD 640GB (350 GB x 2)



### C-AP105

#### coaxial transmitter/receiver

- Transmit video, audio and control signals on one coaxial cable



### C-VD6

#### distributor

- Distribute one video input signal to six video outputs or two video signals to three outputs



## PTZ Combination Dome Cameras



### C-CC704

#### PTZ mini combination dome

- Dome type colour camera
- 64 Preset positions
- Panning: Endless 360° rotation, Tilting +2° to -90°
- Auto-pan, auto-trace, tour
- RS-485 communications system
- 10x optical zoom
- Operating temperature -10°C to +50°C
- Four alarm inputs
- 24V AC

### C-RM700

#### remote controller

- Controls up to 16 cameras in combination with multi-switcher
- RS-485 (Type A and B) camera control
- Alarm input: RS-232C, D-sub connector
- Maximum cable distance 1.2 km
- 12V DC



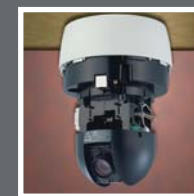
### Features

- High speed pan/tilt: 360°/second
- 255 preset positions
- 1/4 inch CCD imager
- 480 TVL resolution (min)
- Zoom: 23X optical, 12X electronic
- Pelco "D" protocol compatible
- Versatile features
- High sensitivity
- Alarm inputs
- Indoor and outdoor models available
- Outdoor models: dust/water protection IP66
- Operating temperature for outdoor models: -40 C to +50 C

## Indoor Combination Dome

### standard and advanced

- C-CC574 35X zoom multi-function
- Wide dynamic range and day/night functions
- 540 TVL resolution
- Tilt rotation range: +5° to -185°
- Auto-flip function
- Eight alarm inputs
- C-CC564 23X zoom multi-function
- Wide dynamic range and day/night functions
- High sensitivity: 0.03 lux
- Tilt rotation range: +5° to -185°
- Auto-flip function
- Eight alarm inputs
- C-CC514 22X zoom multi-function
- Tilt rotation range: +5° to -90°
- Three alarm inputs



## Outdoor Combination Dome

### standard and advanced

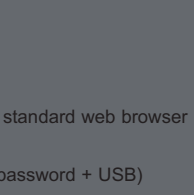
- C-CC774 35X zoom multi-function
- Wide dynamic range and day/night functions
- 540 TVL resolution
- Tilt rotation range: +5° to -185°
- Auto-flip function
- Built-in heater and fan
- Three alarm inputs
- C-CC764 23X zoom multi-function
- Wide dynamic range and day/night functions
- High sensitivity: 0.03 lux
- Tilt rotation range: +5° to -185°
- Auto-flip function
- Built-in heater and fan
- Three alarm inputs
- C-CC714 22X zoom standard
- Tilt rotation range: +5° to -90°
- Built-in heater and fan
- Three alarm inputs



## Digital Video Recorders

### Features

- 16 models featuring different video input capabilities, HDD storage capacities and optional DVD burner
- Integrated multiplexer supports 9 or 16 cameras
- 80, 160, 320, 600 GB versions (expandable with optional disk arrays)
- Optional DVD recorder
- 720 x 240 resolution and max. 120fps recording rate
- Audio input and output
- USB media interface for mobile recording media
- Large system capacity: cascade up to 8 DVRs for 128 camera inputs and 43.2 Terabyte data storage (max. system storage)
- Network interface (100BaseT)
- Remote surveillance and control using standard web browser
- E-mail notification
- Double keylock protection (password, password + USB)
- Network Time Protocol (NTP) ensures accurate time-stamp
- Alarm, motion detection and mirror recording
- Falsification detection prevents image tampering
- Optional remote camera controller, model C-RM1000



#### Hard Disk Expansion Unit:

- C-DA1000-1 (1.2TB) and C-DA1000-2 (2.4TB)
- Connect up to two Disk Array units per DVD
- Mirroring function ensures fail-safe recording



### C-RM1000

#### remote controller for DVRs and combination dome cameras

- Controls up to 8 DVRs and 128 cameras
- Connect up to 4 Remote Controllers (w/optional C-RF1000 Interface Unit)



### C-RF1000

#### remote controller interface

- Allows connection of up to four C-RM1000 Remote Controllers

## Wide Dynamic Range Camera



### C-CC364 WDR

#### wide dynamic range camera

- Wide dynamic range and day/night functions
- High sensitivity: 0.5 lux (colour mode); 0.01 lux (B/W mode)
- 1/3-inch CCD imager
- 500 TVL resolution
- Alarm input
- 24V AC or 12V DC
- CS lens compatible (available separately)
- Optional C-RU10 remote controller

## Vandal Resistant Day/Night Camera

### C-CV854D-3/9

#### indoor/outdoor day/night camera

- Vandal resistant with day/night operation
- 1/3-inch CCD with C-CV854D-3: 540 TVL C-CV854D-9: 480 TVL resolution
- 3.0 - 9.0mm varifocal lens (C-CV854D-3)
- 9.0 - 21.0mm varifocal lens (C-CV854D-9)
- High sensitivity: 0.5 lux (colour mode); 0.05 lux (B/W mode)
- Dust/water-proof construction (IP66)
- Tamper-proof, sturdy design; impact resistance against 50-joule energy
- 24V AC or 12V DC
- Operating temperature of as low as -30°C (optional heater unit C-A854H)



## Compact Colour Cameras



### C-CV454D-3/9/18

#### outdoor day/night camera

- C-CV454D-3 1/3" CCD with 540TVL resolution & 3.0 - 9.0mm Vari-focal
- C-CV454D-9 1/3" CCD with 480TVL resolution & 9.0 - 22mm Vari-focal
- C-CV454D-18 1/3" CCD with 480TVL resolution & 22 - 50mm Vari-focal
- Day/Night function with digital noise reduction
- Dust/water-resistant IP66
- High sensitivity: 0.5 lux (colour mode); 0.1 lux (IR LED mode); 0.05 lux (night mode)
- 10°C to +50°C operating temperature
- 24V AC or 12V DC

### C-CV44-3

#### outdoor colour camera

- 1/4-inch CCD with 480 TVL resolution
- 3.0 - 6.0mm varifocal lens
- Auto-iris
- Dust/water-resistant construction (IP66)
- Backlight compensation function
- Adjustment switch for easy focusing without using an ND filter
- 24V AC or 12V DC operation



### C-CV14-2

#### indoor colour camera

- 1/4-inch CCD with 480 TVL resolution
- 2.0 - 4.0mm varifocal lens
- Auto-iris
- Backlight compensation function
- Adjustment switch for easy focusing without using an ND filter
- 24V AC or 12V DC operation



### C-CV202-3/F3

#### indoor colour dome camera

- C-CV202-F3 - fixed 3.0mm
- 1/4-inch CCD with 480 TVL resolution
- Auto-iris
- Backlight compensation function
- 12V DC operation



### C-CV102-CS

#### indoor colour camera

- Economy, box-type, indoor colour camera
- 1/4-inch CCD with 480 TVL resolution
- CS lens compatible (available separately)
- Auto-iris
- Backlight compensation function
- 12V DC operation



### C-CV14-CS

#### indoor colour camera

- 1/4-inch CCD with 480 TVL resolution
- Auto-iris
- Backlight compensation function
- Adjustment switch for easy focusing without using an ND filter
- CS lens compatible (available separately)
- 24V AC or 12V DC operation

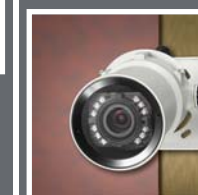


### C-CV24-2

#### indoor colour dome camera

- 1/4-inch CCD with 480 TVL resolution
- 2.0 - 4.0mm varifocal lens
- Auto-iris
- Backlight compensation function
- Adjustment switch for easy focusing without using an ND filter
- Lens: horizontal: 53.2° - 105.1°; vertical: 39.8° - 77.4°
- 24V AC or 12V DC operation

## IR Cameras



### C-CV454R-3

#### outdoor day/night IR camera

- Built-in IR LED illuminator covers 25m
- 1/3-inch CCD with 540TVL resolution
- 3.0 - 9.0mm varifocal lens
- Day/night function with digital noise reduction
- Dust/water-resistant IP66
- High sensitivity: 0.5 lux (colour mode); 0.2 lux (IR LED mode); 0.1 lux (night mode)
- 10°C to +50°C operating temperature
- 24V AC or 12V DC

### C-CV854R-3

#### outdoor day/night IR camera

- Built-in IR LED illuminator covers 25m
- 1/3-inch CCD with 540 TVL resolution
- 3.0 - 9.0mm varifocal lens
- Dust/water-resistant IP66 & vandal resistant
- Tamper-proof, sturdy design; impact resistance against 50-joule energy
- High sensitivity: 0.5 lux (colour mode); 0.2 lux (IR LED mode); 0.1 lux (night mode)
- Operating temperature as low as -30°C with optional heater (C-A854H)
- 24V AC or 12V DC

