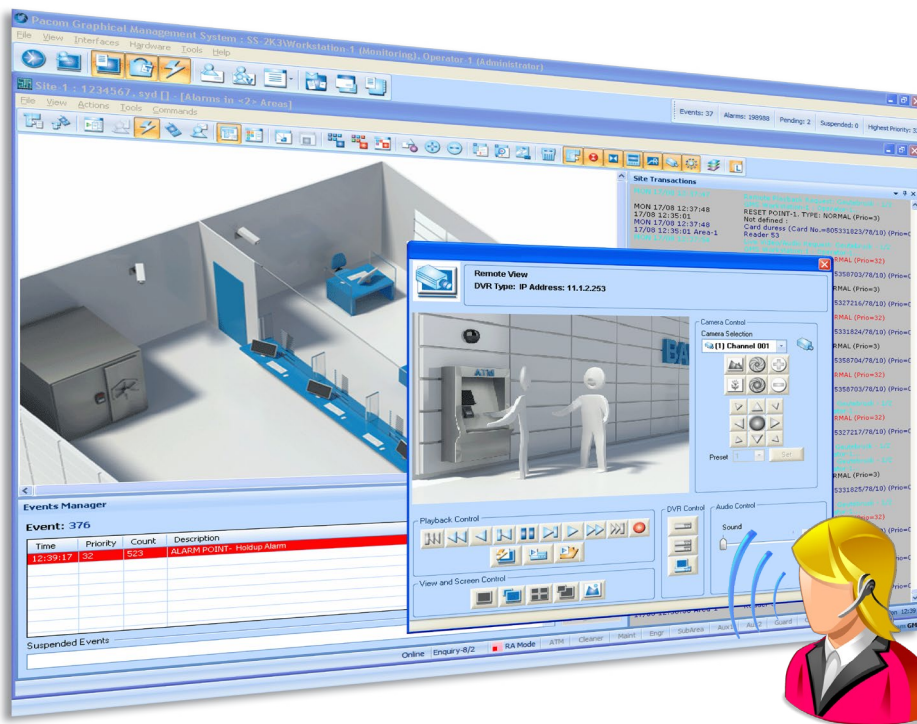




► DATASHEET GMS/TOA IP INTERCOM INTEGRATION



Key Features

- Dedicated Intercom Manager displays all active intercom calls
- Ability to display live streaming video in response to an intercom call
- Activate any event based on an intercom call
- Calls from intercom stations can be dispatched to specific GMS workstations
- Ability to automatically display the appropriate sitemap when an intercom call is selected by an operator
- Programmable timeout for intercom calls

The intelligent interface between Pacom's Graphical Management System (GMS) and TOA IP Intercom products add a new dimension to integrated access, alarm and video interoperability.

The GMS Intercom Module enables a TOA IP intercom solution to be integrated into the Pacom GMS system. GMS provides the convenience for system operators to respond to calls, perform actions and monitor the status of the entire intercom system. All this is done while leaving the intercom system to handle the task for which it was primarily designed - audio communications, providing a very powerful and completely integrated security environment.

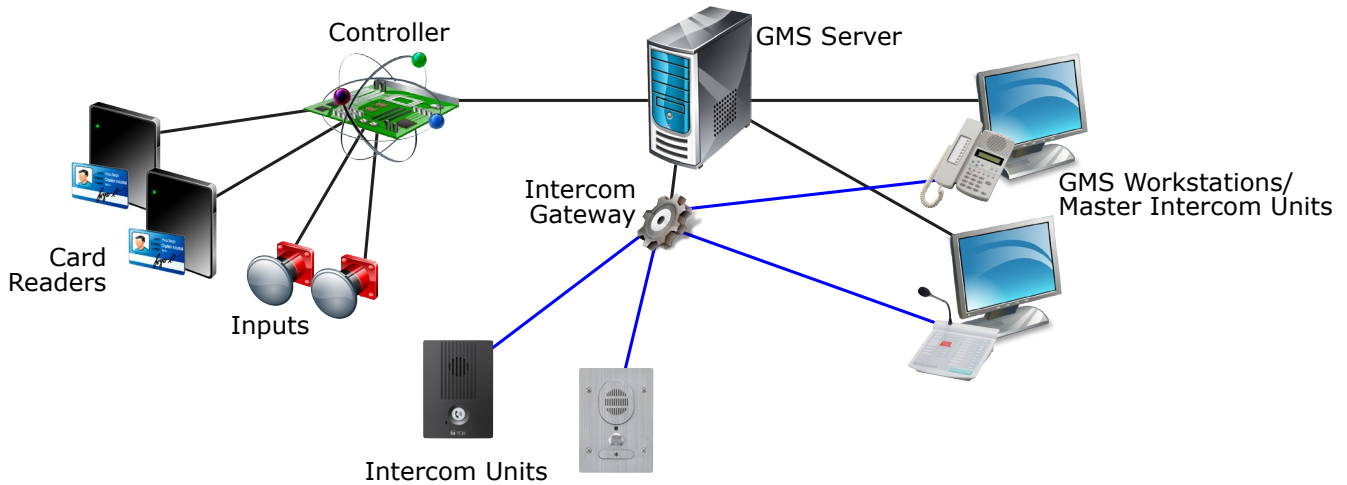
GMS includes an intuitive Intercom Manager which allows all intercom call requests to be prioritized and queued. When a call request is received it is added to the Intercom Manager and the intercom icon on the sitemap will change color to reflect its status and a sound file can be played. When the call is selected by a GMS operator, it remains within the call list of the Intercom Manager on his/her workstation, but is removed from the list on all other workstations.

Specific actions can be performed automatically when receiving or responding to intercom calls. For example, when an intercom call is made or an operator responds, it may trigger the lights to switch on or even live video to be displayed on the GMS workstation. The GMS Intercom Module has been designed to be as flexible as possible, and can be programmed to suit any security environment.

When a card reader is associated with an intercom unit, the access control decision can be transferred to the GMS operator. This allows the operator to quickly and easily remotely unlock the door for authorized users. After presentation of a card, the GMS operator will be displayed the intercom location, instructions, user's name, department, personal ID and photo and have the option to "Allow" or "Deny" access to that door. Multiple readers can also be associated with the same intercom if necessary to allow the operator to select the appropriate door to open.



Architecture



Product Overview - Video Integration

Specifications	Technical Compatibility
Intercom units Supported	GMS Version GMS V4.10 or later
Intercom Call Timeout (programmable minutes)	GMS Intercom Gateway V2.0
Group Call (simultaneous units)	GMS Plugin Version V1.0
Intercom Alarms	
Device online/offline	Intercom SDK Version(s) Remote Control Protocol Ver. 2.01
System online/offline	Website http://www.toaelectronics.com/
Gateway Service online/offline	Compatible Products TOA N-8000 Series (Ver 3.00 or later)
Intercom Controls	
Initiate a Call	
Disconnect Call	
Mute	
Isolate Intercom Unit	
System Controls	
Control outputs	
Display live video	
Lock/unlock doors	
Controller commands	
Intercom Triggers	
Intercom call received	
Intercom call actioned	
Access granted	
Access denied	

Order Information

Part Number	Type Code	Description
100 042 011	GMS-INTERCOM	GMS Intercom Module. Enables a high level interface between GMS and a range of third party intercom systems.